

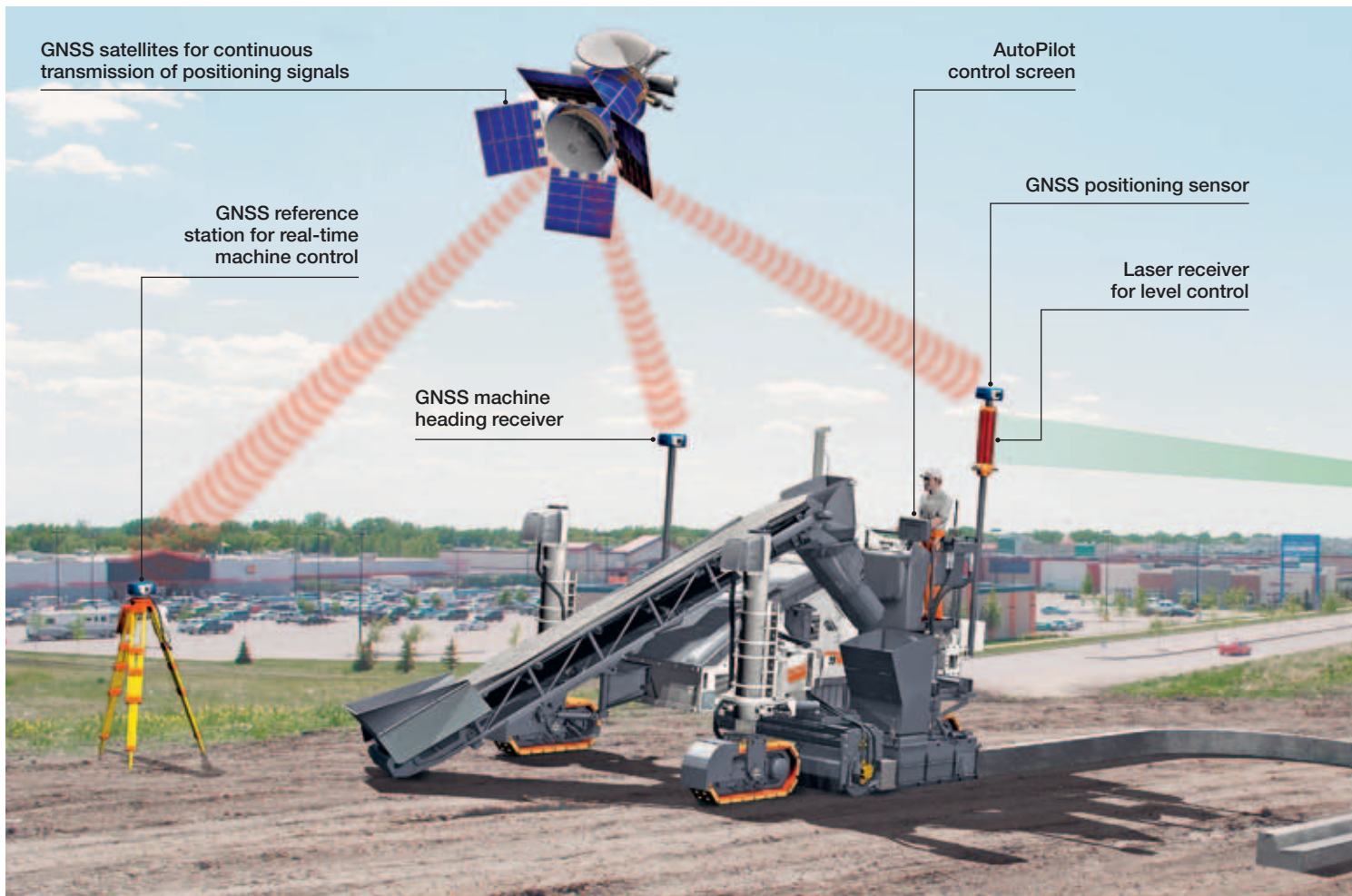


Fully automatic 3D control

AutoPilot for Wirtgen offset pavers



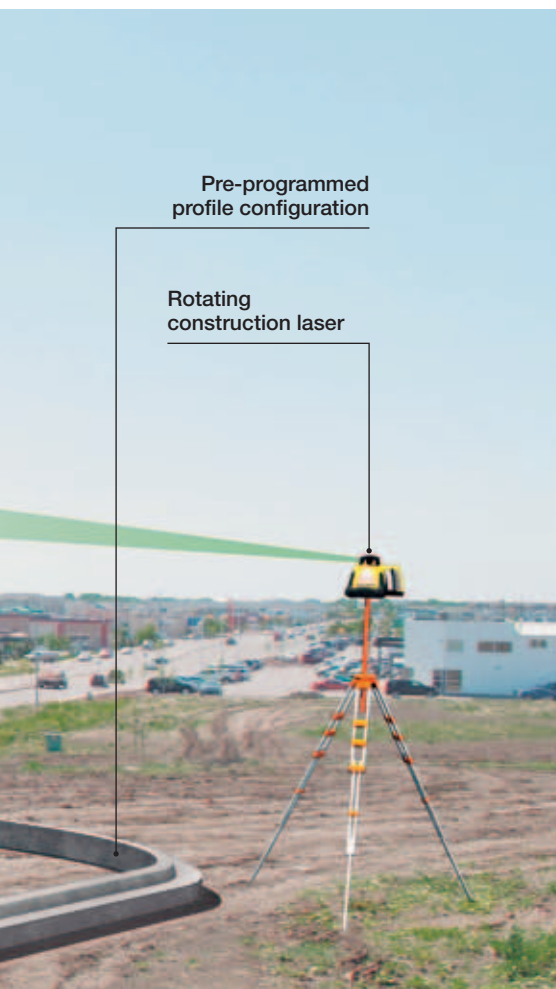
Wirtgen AutoPilot – the world's most efficient machine control system



Quick, simple, cost-effective

Conventional, expensive machine control systems for the production of poured-in-place concrete profiles are often unprofitable and too complicated to handle in particular for smaller contracting companies. Wirtgen provides customers with the AutoPilot, an innovative and competitively priced 3D machine control system. The GPS system has been fully customized for use with the Wirtgen

SP 15 and SP 25 slipform pavers. It assists with the fully automatic paving of most diverse profile configurations, such as straight, curved or oval profile paths. Operation is extremely easy – and programming the system a matter of mere minutes. What's more: the operator is always in full control of the process – he can intervene in the automatic paving process whenever necessary.



◀ Construction site layout for 3D control using the Wirtgen AutoPilot

▼ A small number of buttons and switches only on the clearly structured control screen

Work more efficiently without stringline



- The proprietary 3D control system pays off quickly by giving users a competitive edge and opening up new fields of application.
- Time-consuming and labor-intensive surveying, as well as installation and removal of stringlines belong to the past.

- The system is handled effortlessly and skillfully even by inexperienced personnel after only a short training period.
- Parameters are entered via the click wheel button and the function keys at the separate control screen.

Completing construction projects successfully with the AutoPilot



Many common applications are part of the repertoire

// The ingeniously simple, yet highly efficient Wirtgen AutoPilot enables most of the operations that are generally required from an offset slipform paver to be completed without the use of stringlines. These include, for example, the production of poured-in-place concrete profiles that can be constructed as straight or curved paths, a combination of both or closed configurations.

In addition, the paving of such profile configurations is often part of lucrative major contracts, such as the construction of new housing areas, shopping centers or parks. The type of concrete profile to be manufactured is of no importance: curbs, curb and gutter profiles, canals, narrow paths or safety barriers are always paved to perfection.

Paving curb and gutter profiles
in a new housing area – constructed
as a long straight path ...



With 3D on the
road of success

... or as a curved path with
an extremely small radius

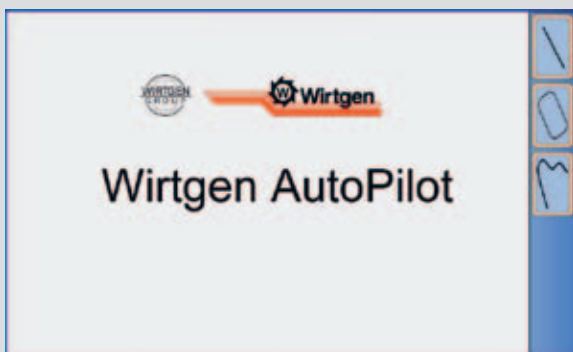


Complex profile paths:
no problem at all for the
Wirtgen AutoPilot

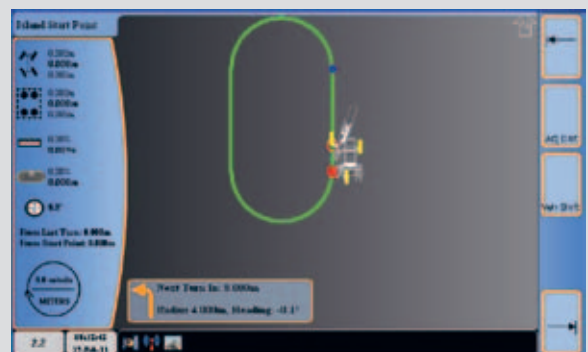


- The paving of curved profile paths offers especially great cost-saving potentials because the usual installation of a large number of stakes can be dispensed with.
- Stringless control via the AutoPilot enables not only most diverse profile paths but also extremely small radii of only 600 mm (2 ft) to be realized.
- The system can be pre-programmed with the position of any obstacles, such as manhole covers, which are then easily eliminated automatically.
- Wirtgen offers ground scanning via ultrasonic sensors as an alternative option to level control via a rotating laser.

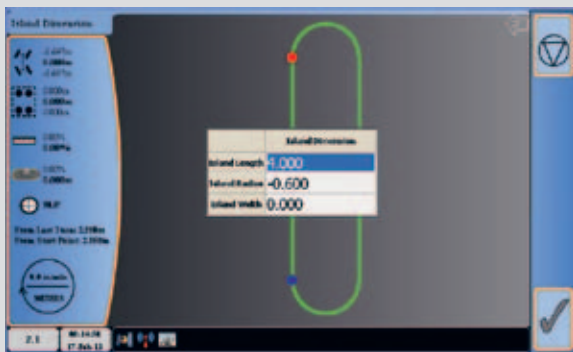
Operation of the AutoPilot – 3D can be as easy as that



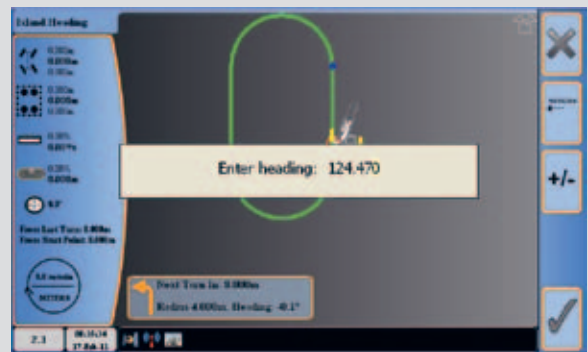
1 Start-up screen with selection of the three basic configurations: straight path, island or combination



3 Enter starting point on configuration



2 Enter parameters of basic configuration or load predefined configurations

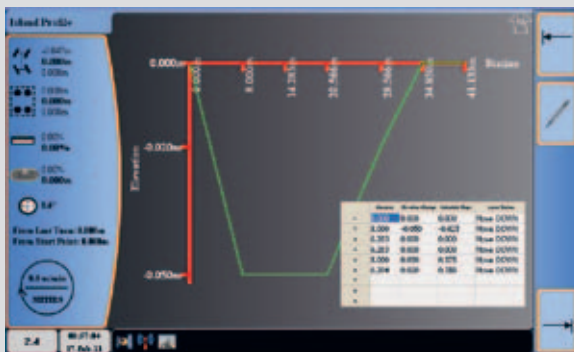


4 Select or enter machine heading

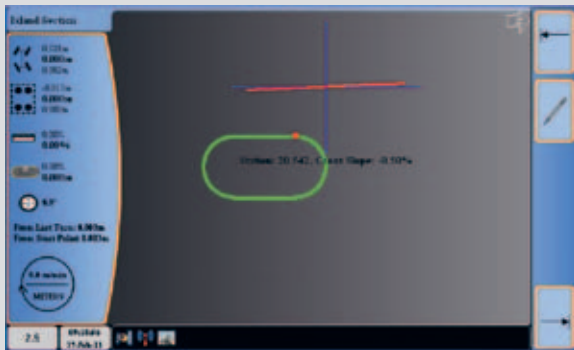
Ready for operation in a mere matter of minutes

Going down a different path – and with great success: with the Wirtgen AutoPilot, which has been newly developed from the ground up, 3D is really simple even for inexperienced users. In a first step, the reference station and rotating laser are positioned on the construction site, and the slipform paver is taken to the specified starting position and heading. The operator enters the

parameters required for the course of the poured-in-place concrete profile in no more than six steps. These preparations are completed in just a few minutes, and then paving can begin. The operator is in full control during the entire duration of the automatic paving process. He can modify the machine's height and angle of incline, steer to the left or right, or interrupt the paving process altogether.



5 If required:
enter vertical profile



6 If required:
enter cross slope profile

Reaching
the goal faster

Intuitive entry of the
required parameters ▼



Parameters are entered via a click wheel button and function keys at the clearly structured control screen.

The control screen keeps the operator informed of current machine and system parameters.

Previously programmed profile configurations can be saved and retrieved as required.

The self-explanatory menu navigation and clear graphics round out the successful operating concept.



Wirtgen GmbH
Reinhard-Wirtgen-Str. 2 · 53578 Windhagen · Germany
Phone: +49 (0) 26 45 / 131-0 · Fax: +49 (0) 26 45 / 131-242
Internet: www.wirtgen.com · E-Mail: info@wirtgen.com